

---

# CockpitCUBE® Updates and Upgrades

---

Refers to CockpitCUBE®  
Essentials and optional  
Upgrade Modules.

---



# Updates and Upgrades

---

Updates refer to a new version of the same module.

Upgrades refer to an expansion module like the Dual Camera or the Mix&Wipes.

Updates are free and CockpitCUBE® users will be notified when the updates are available.

Upgrades are sold on the webstore and the users can decide to buy them at any moment.

Updates will be available for Upgrade modules too.

Upgrades modules are related to a specific license (Security dongle).

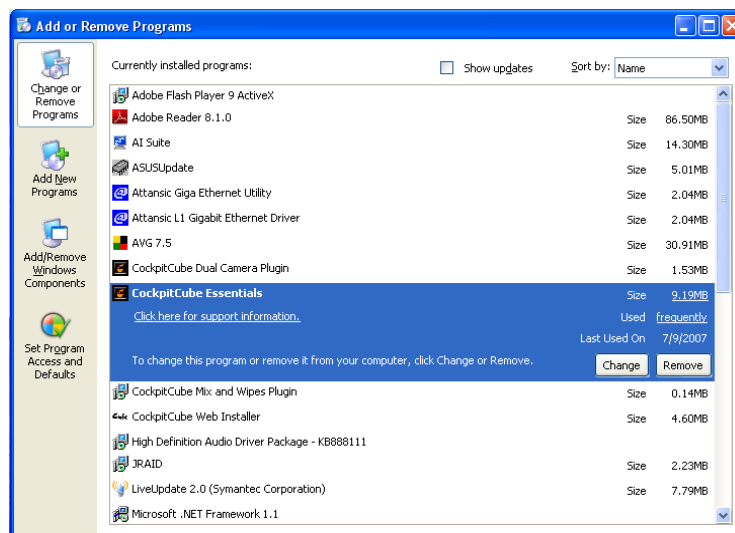
## How to update CockpitCUBE®.

---

When an updated release of the software is available will be published on the Internet and you'll be notified via e-mail.

First you need to backup your databases and the best way of doing it is to make a compressed copy (right-click->Send To->Compressed folder) of the "Data" folder in "C:\Documents and Settings\All Users\Application Data\VideoAssisTech\CockpitSystem\" (if running Windows XP) or "C:\ProgramData\VideoAssisTech\CockpitSystem\" (if running Windows Vista – may require Administrator privileges).

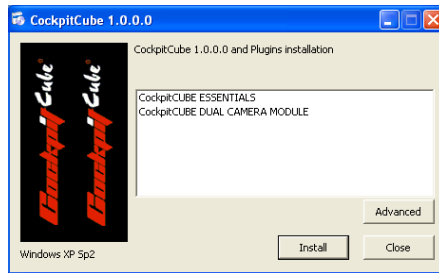
Then uninstall the previous version of the module(s) for which the update(s) has been released, using "Start -> Control Panel -> Add or Remove Programs -> Remove".



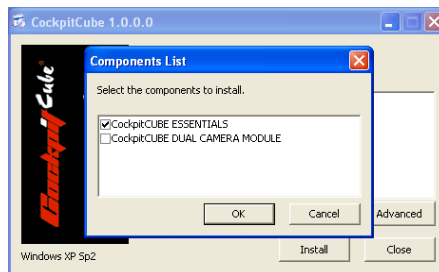
Do not uninstall any other component, unless specifically requested in the notification e-mail.

Run CockpitCUBE® Web Installer from Start->All Programs->CockpitSystem.

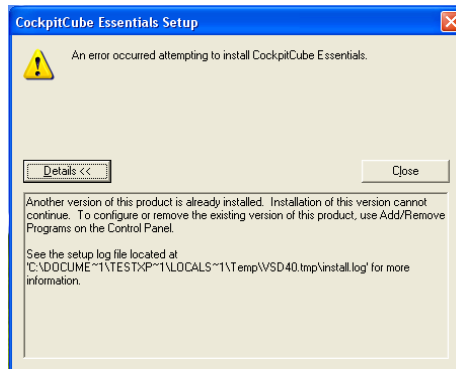
After the Security Dongle check, you'll be prompted to Install the all the Modules licensed for that Security Dongle. Let's say you have CockpitCUBE® Essentials and the Dual Camera module licensed.



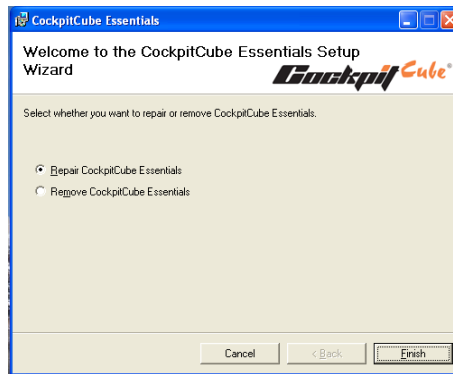
You need to click on Advanced and de-select the modules not involved in the update process prior to proceed with the installation, in this case the CockpitCUBE® Dual Camera Module. Click "OK" and then "Install".



If you don't uninstall the previous release, during the installation of the update you will receive an error stating that you have to uninstall the previous version prior to continue. Click "Close".



If you don't de-select the modules that don't need to be updated, you'll be prompted to choose between Repair or Uninstall the current installation. Click Cancel.



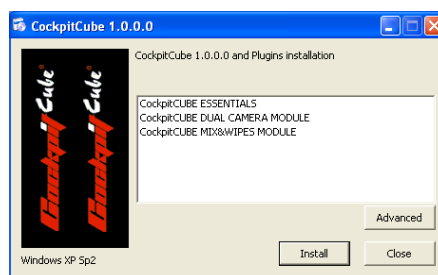
At the end of the installation you can run your Updated copy of CockpitCUBE®.

## How to Upgrade CockpitCUBE®.

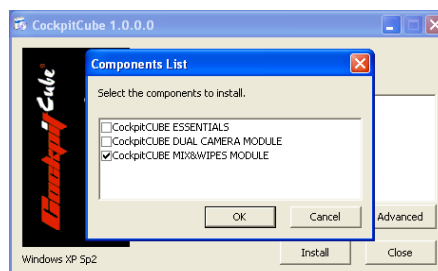
---

Log-on the webstore using you Login and Password. You'll be presented with the list of purchased CockpitCUBE® Essentials licenses and upgrade. Each CockpitCUBE® Essentials license has a number of upgrade modules linked to it. Select the modules you want to be activated for a particular CockpitCUBE® license or for more. Once the order has been processed (immediately if paid with credit card) you can run the "CockpitCubeWebInstallerV2.0" from "Start -> All Programs -> CockpitSystem". The installer will use the license written inside the Security Dongle to determine which modules you have the right to acquire.

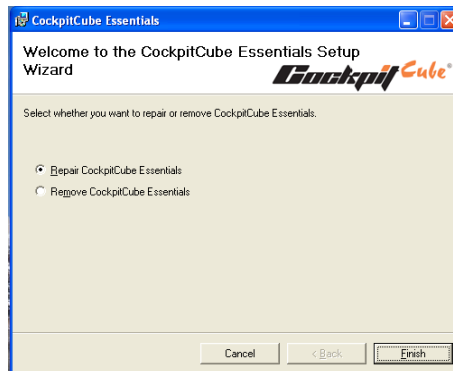
You'll be prompted to Install the Modules, to Install the all the Modules licensed for that Security Dongle. Let's say you had CockpitCUBE® Essentials and the Dual Camera already module licensed. The new CockpitCUBE® Mix&Wipes Module will appear in the list.



You need to click on Advanced and de-select the modules not involved in the upgrade process (all the modules already installed) prior to proceed with the installation. Click "OK" and then "Install".



If you don't de-select the modules that are already installed, you'll be prompted to choose between Repair or Uninstall the current installation. Click Cancel.



At the end of the installation you can run your Upgraded copy of CockpitCUBE®.

## Multiple Installations

---

It's possible to install a copy of CockpitCUBE® Essentials and its upgrade modules to any number of computers. Once the installation has been completed on the first computer, simply restart the installation procedure as described in the CockpitCUBE® Essentials XP (or Vista) Installation Procedure manual on all other computers.

Simply put, you need to run the CockpitCUBE® Web Installer from the link you received in your Order Confirmation e-mail from the computer you want to install the application onto.

You have to be connected to the Internet throughout all the installation period.

Don't plug-in the Security Dongle until requested by the installer and follow the procedure.

The installer will figure out by himself which modules need to be downloaded and installed depending on which Security Dongle is plugged-in. In case you have bought multiple licenses and maybe only one has one or more upgrade module enabled, we suggest you use the key with more options enabled to do the multiple installations, otherwise when you plug-in the Security Dongle with more options enables you will have to install the appropriate modules to be able to use all functionalities licensed on that particular Security Dongle.